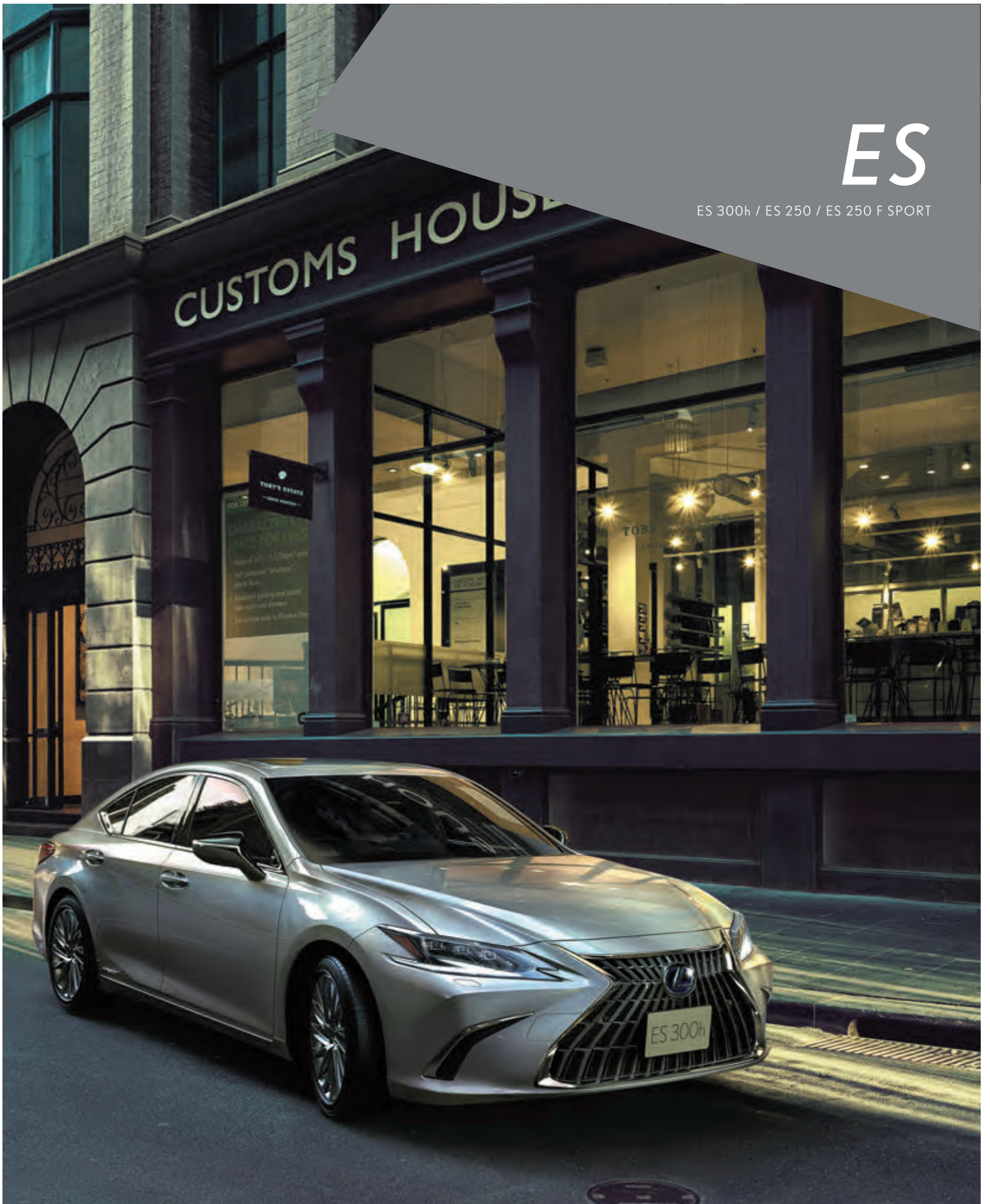


ES

ES 300h / ES 250 / ES 250 F SPORT





Note: Vehicles pictured and specifications detailed in this catalog may vary from models and equipment available in your area. Please inquire at your local dealer for details on the availability of features.









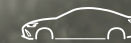
LEXUS

INTELLIGENCE

SEVEN

1

CONCEPT



P14

2

DESIGN



P20

3

PERFORMANCE



P24

4

FEATURES



P32

5

SAFETY



P40

6

F SPORT



P44

7

TAKUMI



P50

CONCEPT



Is it possible to experience extraordinary joy in daily life? We created the ES to do just that. To the regular tasks of moving you from place to place, it adds pleasure, comfort, and peace of mind, turning the routine into special experiences. The rejuvenated ES injects excitement into your everyday.



» INTELLIGENCE



Note: Vehicles pictured and specifications detailed in this catalog may vary from models and equipment available in your area. Please inquire at your local dealer for details on the availability of features.



We further refined the renowned quietness and ride comfort of the ES's spacious interior, then heightened the experience of driving pleasure. Even as you relax in comfort, the elegant design catches eyes on the street. As Lexus's unique luxury sedan, the ES goes a step beyond to provide premium comfort.



DESIGN



Given the beautiful proportions, low center of gravity, and coupe-like styling, you would never guess at the spacious interior. It delivers an emotional design that excites occupants, while capturing the attention of people passing by.



» INTELLIGENCE



Note: Vehicles pictured and specifications detailed in this catalog may vary from models and equipment available in your area. Please inquire at your local dealer for details on the availability of features.

EXTERIOR

The flowing roof line that slopes towards the rear complements the balanced proportions and accentuates the wide, low stance. The sharp front face and rich contrast of the side profile contribute to a powerful presence that invites you to experience exhilarating driving.



INTERIOR

The interior provides a comfortable, human-centered space. Controls in the snug cockpit have been laid out so that drivers don't need to change their line of sight or posture, while passengers enjoy a calm, relaxing space with ample legroom.





PERFORMANCE



Simply depress the accelerator or turn a corner, and you'll realize the ES refines the basics of performance. The smooth acceleration and optimized cornering control realize response that resonates with the driver's feelings. Even turning at an intersection you often drive through, you'll experience a warm thrill of excitement.



» INTELLIGENCE



GA-K (Global Architecture-K) platform
 Lexus developed the platform for the ES from scratch to create the foundation for excellence in core criteria, including design, dynamic performance, ride quality, quietness, and safety. For dynamic performance, the location and angle of the steering wheel and pedals were reviewed to create a posture that supports easy driving. To augment the vehicle's excellent DNA with its low center of gravity and uniform lateral weight distribution, the geometry of the high-rigidity body and chassis were optimized to deliver excellent straight-line driving stability, stable cornering, and braking stability. In addition, the integration of advanced features including parallel rack EPS (Electric Power Steering), and performance dampers provide secure and pleasant handling that closely responds to the driver's intentions. Finally, we aggressively blocked vibrations and reduced every aspect of sensitivity to vibration to reduce noise and vibrations from the engine and tires, to provide a comfortable ride with outstanding quietness.

Multi material body

The ring-shaped body structure helps to reduce body torsion. A V-shaped brace behind the rear seats contributes to coupling rigidity for excellent stability. In addition, body rigidity is enhanced by the extensive use of advanced technologies including laser screw welding and structural body adhesives. Optimizing the use of hot-stamp and high-tensile steel in key body components also reduces weight while contributing to excellent collision safety.



EPS (Electric Power Steering)

The parallel rack electric power steering system provides crisp, clean response as soon as you start turning the steering wheel. The steering column offers enhanced rigidity and excellent steering feel.



Performance dampers[^]

Performance dampers in the front and rear boost the feeling of unity between car and driver. The dampers quickly absorb body flex and minuscule vibrations while driving to sharpen handling characteristics and contribute to the excellent ride comfort and quietness.



Active engine mount

Large mounts positioned in the front and rear of the engine decrease vibrations at engine start-up. In addition, they reduce idling vibration, low-frequency engine noise during low-rpm driving, and engine noise during high-rpm driving. By suppressing vibrations transmitted from the engine, they also contribute to the excellent ride comfort and quietness.

[^]For F SPORT and Luxury variants only

Note: Vehicles pictured and specifications detailed in this catalog may vary from models and equipment available in your area. Please inquire at your local dealer for details on the availability of features.



Aerodynamics

Aerodynamic performance is seamlessly integrated into the elegantly-shaped silhouette so that air flows from the rear seats to the trailing edge of the trunk. Fins on the underbody cover and rear combination

lamps reduce air resistance, contributing to the quiet interior and excellent fuel efficiency. The controlled air flow also enhances driving stability.



Suspension

The geometry of the McPherson strut front suspension was optimized to realize excellent steering response and turning stance, together with premium ride comfort. The arm positions on the trailing-arm double-wishbone rear suspension were optimized to smoothly handle uneven road surfaces, providing an excellent blend of handling stability and ride comfort. In addition, the shock absorbers on both the front and rear suspension incorporate swing-valve shock absorbers that respond to even minuscule movements, to provide an exceptionally flat feel when starting up, as well as excellent straight-line stability when driving at speed.

Brakes

Engineered for excellent braking force, control and response, the brakes provide intuitive response to the driver's input, feeding driving pleasure by supporting exciting driving with peace of mind. In addition, the ES is equipped with an electric parking brake, further enhancing easy operation and driving enjoyment.



Drive mode select

Drive mode select provides integrated control of multiple systems to let you tune performance to suit your driving style. You can select and change between three modes: Eco, Normal, Sport.

Note: Vehicles pictured and specifications detailed in this catalog may vary from models and equipment available in your area. Please inquire at your local dealer for details on the availability of features.



Direct Shift-8AT

The Direct Shift-8AT delivers both exciting performance with direct response and outstanding fuel efficiency. The 8-speed configuration provides a 20% wider gear ratio, contributing to powerful acceleration and quiet, smooth performance during high-speed cruising, while enabling continuous operation in the engine's high-efficiency zone to significantly enhance fuel efficiency. In addition, maximizing use of the lock-up control delivers direct response that quickly responds to accelerator operation.



Lexus Hybrid Drive

The hybrid system aims to transform people's image of hybrid performance even as it realizes exceptional fuel efficiency. By combining the excellent response of the 2.5-liter L4 engine with a compact, small

lightweight battery and sophisticated control capabilities, it delivers a smooth natural acceleration feel, responding instantly to accelerator inputs.

2.5-liter L4 engine (A25A-FXS)

The 2.5-liter L4 engine delivers a sophisticated blend of dynamic performance, fuel efficiency and environmental friendliness. Reviewing the engine's basic design, adopting a longer stroke and high-efficiency intake ports, and enhancing the flow of air in the cylinders realize high-speed combustion. Additional refinements include multi-hole direct injectors, a continuously variable-capacity oil pump, a variable cooling system, and VVT-iE on the intake-side valves.*2



*1 VVT-iE: Variable Valve Timing-intelligent by Electric motor.

Note: Vehicles pictured and specifications detailed in this catalog may vary from models and equipment available in your area. Please inquire at your local dealer for details on the availability of features.



FEATURES



Refining the advanced levels of luxury and utility experienced in the previous generation model enables the driver and passengers to enjoy premium comfort, for a quality of luxury comfort that is consistently a step ahead.

» INTELLIGENCE



The sharp face is focused on the Lexus spindle grille, a core design cue that is heightened by the compact LED headlamps, that integrate innovative BladeScan AHS headlamps. The DRL (Daytime Running Lamps) emit an L-shaped light that radiates a smart and fearless expression. L-shaped LED rear combination lamps further embed

the distinctive Lexus identity. Advanced features including acoustic glass and seatback silencers contribute to the extremely low noise levels in the cabin, further enhancing this relaxing private space. It is a refined expression of Lexus hospitality that remains ahead of its time in shaping perceptions of luxury.



Bi-LED Triple "L" Headlamps

The slim, square design of the 3-eye Bi-Beam LED headlamps projects a sharp futuristic look, heightened by the thin light beam design of the turn signal lamps. It integrates innovative BladeScan AHS headlamps to help provide excellent night-time visibility, to help support early recognition of pedestrians and road signs for reliable, stress-free driving.

LED rear combination lamps

The L-shaped rear combination lamps reinforce the ES's Lexus identity. The three-dimensional design was engineered to combine high visibility with distinctive style.



Panoramic Glass Roof

The large glass roof lets in an abundance of light, adding to the spacious airy feeling in the cabin. It has three sections: the front acts as a wind deflector when the center is slid open, the center has a power tilt and slide function, and the rear is a fixed type. For safe operation during closing, the glass roof stops temporarily in a safe position, and requires a further press of the close switch to fully close it.



Hands-free power trunk lid

Even if both hands are full, when carrying the Electronic Key you can open and close the trunk lid automatically by moving your foot under the rear bumper and out again.

Rear bumper

The character lines of the side silhouette converge to give the rear a dynamic presence. Combining high rigidity with excellent recyclability, the rear bumper accentuates this presence, endowing it with a strong sense of stability.



Acoustic glass

The windshield and front door windows are fitted with a special acoustic glass with excellent sound insulating properties.



Note: Vehicles pictured and specifications detailed in this catalog may vary from models and equipment available in your area. Please inquire at your local dealer for details on the availability of features.



EMV touch displays/meter/color head-up display[^]
 The EMV (Electro Multi-Vision) enables simple touch operation, with a high-resolution wide screen that is easy-to-read even when the menu and maps are displayed simultaneously. Ergonomics helps refine the display's position in front of the driver for easy viewing and operation, optimizing the angle and the position of the unit to minimize intrusion into the driver's line of sight. The result is an interface that is easy to focus on and enables intuitive fingertip operation, while maintaining forward visibility and a comfortable driving position. The EMV displays incoming calls, audio system and other information, and coordinates display of select information with the multi-information display integrated into the 7-inch color TFT (Thin Film Transistor) Optitron meter and the large color head-up display positioned in the driver's line of sight.

Active Noise Control
 Active Noise Control uses engine rpm and a dedicated microphone to identify and reduce muffled engine sound by outputting an opposite-phase sound from the speakers to cancel it out, significantly enhancing quietness in the cabin.

Mark Levinson Premium Surround Sound System[^]
 Adopting a PurePlay layout, 7 Unity speakers with identical performance are arranged along the shoulder line which runs from the instrument panel to the door tops, effectively surrounding the cabin. By placing speakers close to occupants' ears so there are fewer obstructions, this layout realizes clear sound, even in the rear seats. The rich, powerful low-frequency sounds from the woofers combine with advanced sound technology to provide a crisp audio experience that envelops passengers.



nanoe-X
 The climate control system integrates advanced nanoe-X technology, which releases microscopic, negatively-charged "nanoe-X" particles containing 10 times the OH radicals of conventional nanoe systems, helping to purify the cabin air and effectively deodorize the seats and upholstery. The high moisture content of ions displays a healthy moisturizing effect on skin and hair.



Wireless charger
 For wireless charging of batteries, simply place Qi-compatible smartphones and electronic devices on the charging tray in the center console box.

Console box
 The spacious utility box in the console box integrates two USB charging ports for convenient charging and use of portable devices while you are on the move. A lip in the box edge enables smooth routing of cables, to keep your mobile phone close at hand while it is charging.



[^]For F SPORT and Luxury variants only

Note: Vehicles pictured and specifications detailed in this catalog may vary from models and equipment available in your area. Please inquire at your local dealer for details on the availability of features.



Lexus Climate Concierge
The powerful energy-efficient air conditioning system provides 3-zone independent control of the temperature in the driver's seat, front passenger's seat and rear seats. A control panel for rear seat passengers is conveniently located in the rear center armrest.

Rear armrest and multi-operation panel
The rear seats feature a center armrest with convenient cupholders. An integrated control panel lets occupants adjust the audio system, seat recline and other settings, further enhancing passenger pleasure.



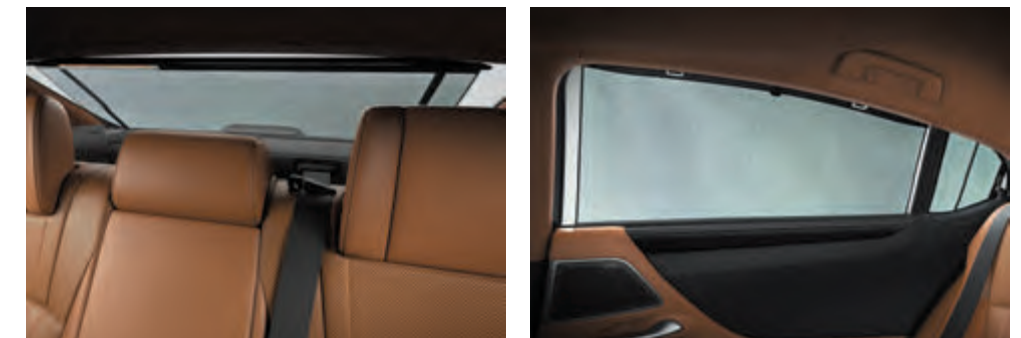
Trunk-through
Trunk-through functionality enables the carrying of longer items that won't fit in the trunk.



Power rear seats
The reclining power rear seats provide up to 8° of recline to create an even more relaxing space.



LED ambient illumination
Subtle Lexus hospitality is seen in the elegant and functional design of the instrument panel and its real stitching detail. The use of LED ambient illumination to indirectly light the lower instrument panel and front and rear door trim, creates a feeling at night of being gently enveloped. The brightness can be adjusted to suit your preference.



Rear door/Rear window sunshades
Sunshades for the rear door and rear quarter windows, and a power sunshade for the rear window provide shade and privacy in the rear seats. For a clear field of view when reversing, the rear window sunshade automatically lowers when reverse gear is engaged.

SAFETY



The ES's exciting performance is underpinned by active and passive safety measures that utilize advanced technologies to deepen your peace of mind.



» INTELLIGENCE



LEXUS SAFETY SYSTEM +

Pre-Collision System

When the millimeter-wave radar and monocular camera sensors detect a collision with a vehicle ahead, a pedestrian during the day or at night, or a bicyclist*¹ during the day is likely, it alerts the driver and activates pre-collision brake assist when the driver depresses the brake pedal. If the driver cannot depress the brake pedal, it activates pre-collision braking. In addition, if it detects an oncoming vehicle, it decelerates and helps to mitigate effects of the collision.*² In the same way, intersection turning assist helps the driver to detect a vehicle or pedestrian in front when turning at an intersection. If the emergency steering assist system detects a collision with a vehicle, pedestrian or bicyclist ahead is likely, there is sufficient space for the vehicle to be steered within its lane and the driver has begun an evasive steering maneuver, it assists steering to help enhance vehicle stability and prevent lane departure.*²



LTA (Lane Tracing Assist)

When Lane Tracing Assist with enhanced lane recognition is activated, it alerts the driver of possible lane or road deviations even when lane markings are interrupted, and helps assist steering to avoid them. In addition, while driving on highways and automobile-only roads with Dynamic Radar Cruise Control activated, it helps assist steering to keep the vehicle in the lane.



Dynamic Radar Cruise Control

In addition to maintaining a constant speed, Dynamic Radar Cruise Control uses the millimeter-wave radar and monocular camera sensors to detect a vehicle driving ahead and maintain an appropriate distance between vehicles.

AHS (Adaptive High-beam System)

In the BladeScan AHS, LED light is projected onto a plate rotating at high speed called a 'blade mirror,' with the reflected light passing rapidly through a lens to illuminate the forward direction. The LEDs switch on and off with optimal timing to enable fine control of light distribution, enhancing the range of illumination while blocking a small area in front of the car. This enables the BladeScan system to provide a broad field of high-beam illumination with natural light distribution to enhance the visibility of road shoulders and other more distant areas, supporting early driver recognition of pedestrians and road signs without dazzling the drivers of oncoming or preceding vehicles.



PKSB (Parking Support Brake)

PKSB detects stationary objects such as walls in the direction of travel, as well as vehicles and pedestrians approaching from behind while reversing*³, and alerts the driver on the display and with a buzzer. In addition, in the event that the system determines a collision is likely, it applies drive force and brake force control to help avoid minor collisions and mitigate damage.



Blind Spot Monitor System

When the quasi-millimeter-wave radars in the rear bumper detect vehicles in adjacent lanes that aren't visible in the door mirrors, the system activates an LED warning indicator in the relevant door mirror the moment a vehicle enters this blind spot.



Panoramic View Monitor

To help check areas surrounding the vehicle that are difficult to see from the driver's seat, the system shows a bird's-eye view of the vehicle in real time on the 12.3-inch EMV touch displays, using a composite image taken by cameras mounted on the front, sides, and rear of the vehicle.*⁵



SRS (Supplemental Restraint System) airbags

The ES features dual-stage SRS airbags (Front seats), SRS knee airbags (Front seats), SRS side airbags (Front and outboard rear seats) and SRS curtain shield airbags (Front and rear seats).*⁴

*¹ Pedestrian, bicyclist and oncoming vehicle detection is not available in some markets. Please inquire at your local dealer for details.

*² Intersection turning assist and emergency steering assist system are not available in some markets. Please inquire at your local dealer for details.

*³ Detection of vehicles and pedestrians approaching from behind while reversing is not available in some markets. Please inquire at your local dealer for details.

*⁴ The SRS airbags are supplemental devices to be used with the seatbelts. The driver and all passengers in the vehicle must wear their seatbelts properly at all times. Never install a rear-facing CRS (Child Restraint System) on the front passenger's seat. For a forward-facing CRS, it is recommended you use it in the rear seats. Please do not use accessories for the seats which cover the parts where the SRS side airbags should inflate. Such accessories may prevent the SRS side airbags from activating correctly, causing serious injury (Lexus genuine seat covers are specifically designed for models equipped with the SRS side airbags). To find out about availability in your area, please inquire at your local dealer. The photo shows all the SRS airbags activated for display purposes only (the SRS side and curtain shield airbags only inflate on the side of the collision in an actual accident). For details on these and other important safety features, be sure to read the Owner's Manual carefully.

*⁵ The area the cameras can show is limited. Be sure to visually check your surroundings before you proceed.

Note: The systems functions may not operate properly depending on the weather, road and vehicle conditions or other factors. Be sure to read the Owner's Manual carefully. Do not overly rely on these systems, as there is a limit to the performance they can provide. The driver is always responsible for paying attention to the vehicle's surroundings and driving safely. Images showing the systems, detection area of the camera and radar/sensors are for explanatory purposes only. Vehicles pictured and specifications detailed in this catalog may vary from models and equipment available in your area. Please inquire at your local dealer for details on the availability of features.

F SPORT



F SPORT evolves the Lexus sport DNA that finds its ultimate expression in the LFA supercar, to enable more drivers to experience its exhilarating performance and unique personality.

The F SPORT further enhances the driving excitement of the ES so that drivers can enjoy a sense of oneness with the car, born of its ability to respond immediately to their intentions in various situations.



» INTELLIGENCE



The F SPORT is designed to extend the limits of the ES's smooth performance. The exterior features an exclusive mesh radiator grille, rear lower bumper garnish, and other design cues that highlight the F SPORT's fearless and aggressive personality. In the cabin, a selection

of exclusive features heightens expectation of exhilarating performance. The specially-tuned suspension delivers sharp steering feel, flat cornering and a smooth ride, while additional refinements realize exceptional performance in various driving situations.



A_Front mesh grille / B_Grille molding (jet black plating) / C_Side garnish / D_Aluminum wheels / E_Front fender emblems



F_Trunk lid garnish & rear combination lamps molding (jet black plating) / G_Rear bumper



Performance dampers

Performance dampers in the front and rear heighten the sense of oneness between car and driver. They quickly absorb body flex and minuscule vibrations while driving to sharpen handling characteristics, as well as contributing to the excellent ride comfort and quietness.

Note: Vehicles pictured and specifications detailed in this catalog may vary from models and equipment available in your area. Please inquire at your local dealer for details on the availability of features.



H_Meters & multi-information display / I_Clock / J_Steering wheel / K_Aluminum pedals / L_Shift lever knob / M_Trim



F SPORT multi-information display
The meter ring on the large TFT (Thin Film Transistor) color multi-information display slides to the side at a touch of a switch on the steering wheel.



F SPORT meters
Evolved from the LFA supercar, the advanced interface of the F SPORT's sliding meter ring uses motion graphics that combine beautiful design with excellent visibility to display a range of functions that instantly communicate important information according to its priority.



F SPORT front seats
The exclusive sports seats evoke the sharp design of the LC's sports seats. An 'integrated foaming' structure contributes to the excellent fit and holding performance. Optimized for the F SPORT, these seats combine outstanding comfort with excellent support for the body during sports driving.

TAKUMI



Our Takumi craftsmen strive for perfection in every aspect of their work, actively seeking enhancements by applying constant care and dedication to their craftsmanship, blending their craftsmen's skills with the power of technology to better anticipate the future.



» INTELLIGENCE



EXTERIOR & INTERIOR
COLORS

The ES is available in a selection of captivating and stimulating exterior and interior colors. Its rich form shows a changing face to the world in different light conditions such as sunlight and streetlights at night, providing a dramatic view that changes with the location and time of day.



White Nova Glass Flake <083>*1



Sonic Quartz <085>*2



Sonic Titanium <1J7>



Sonic Chrome <1L1>



Sonic Iridium <1L2>



Black <2I2>



Graphite Black Glass Flake <223>



Red Mica Crystal Shine <3R1>



Ice Ecru Mica Metallic <4X8>



Sunlight Green Mica Metallic <6X0>



Heat Blue Contrast Layering <8X1>*1



Deep Blue Mica <8X5>*2



18-inch aluminum wheels



18-inch aluminum noise reduction wheels



19-inch aluminum wheels (F SPORT)

*1 Available on F SPORT package only. *2 Not available on F SPORT package.

Note: Vehicles pictured and specifications detailed in this catalog may vary from models and equipment available in your area. Please inquire at your local dealer for details on the availability of features.

<LEXUS NULUXE / SMOOTH / SEMI ANILINE LEATHER>



Rich Cream



Hazel



Mauve



Walnut (Open Finish/Brown)



Black

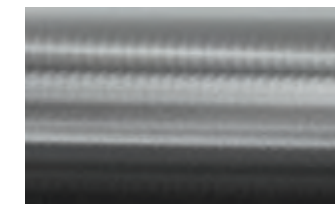


Walnut (Open Finish/Sumi Black)

<LEXUS NULUXE (F SPORT PACKAGE)>



Flare Red



Aluminum (Hadori)



White



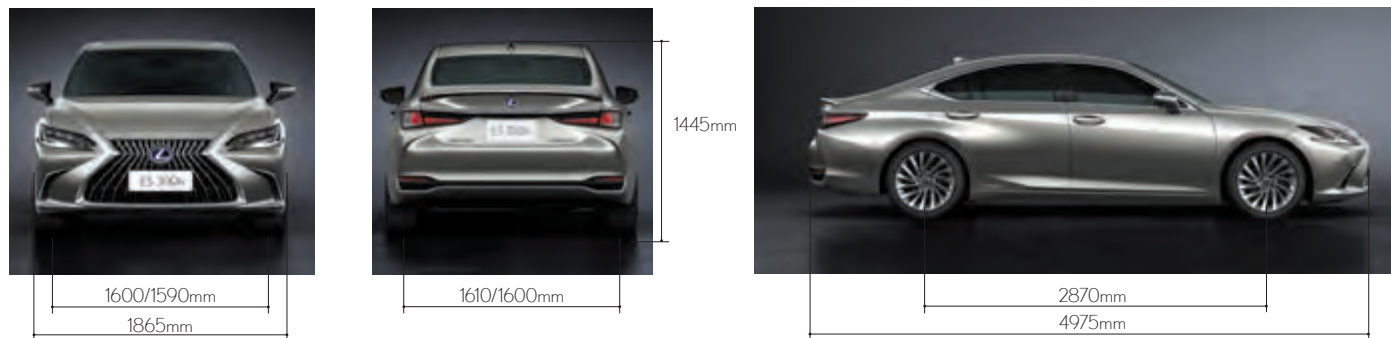
Black

		BLACK WITH WALNUT (OPEN FINISH/SUMI BLACK)	MAUVE WITH WALNUT (OPEN FINISH/BROWN)	HAZEL WITH WALNUT (OPEN FINISH/BROWN)	RICH CREAM WITH WALNUT (OPEN FINISH/BROWN)
085	SONIC QUARTZ	•	•	•	•
1J7	SONIC TITANIUM	•	•	•	•
1L2	SONIC IRIDIUM	•	•	•	•
1L1	SONIC CHROME	•	•	•	•
212	BLACK	•	•	•	•
223	GRAPHITE BLACK GF.	•	•	•	•
3R1	RED MICA CS.	•	•	•	•
6X0	SUNLIGHT GREEN M.M.	•	•	•	•
4X8	ICE ECRU M.M.	•	•	•	•
8X5	DEEP BLUE MC.	•	•	•	•

		FLARE RED WITH ALUMINIUM (HADORI)	BLACK WITH ALUMINIUM (HADORI)	WHITE WITH ALUMINIUM (HADORI)
083	WHITE NOVA GF.	•	•	•
8X1	HEAT BLUE CONTRAST LAYERING	•	•	•
1J7	SONIC TITANIUM	•	•	•
1L2	SONIC IRIDIUM	•	•	•
1L1	SONIC CHROME	•	•	•
212	BLACK	•	•	•
223	GRAPHITE BLACK GF.	•	•	•
3R1	RED MICA CS.	•	•	•
4X8	ICE ECRU M.M.	•	•	•
6X0	SUNLIGHT GREEN M.M.	•	•	•

SPECIFICATIONS

ENGINE	ES 300H	ES 250	ES 250 F SPORT
Engine Type	In-line 4, 16-valve DOHC, VVT-iE (intake), VVT-i (exhaust)		
Drive	Front-wheel Drive		
Transmission Type	E-CVT	8-Speed Automatic Transmission	
Bore x Stroke	87.5 x 103.4 mm		
Displacement	2,487 cc		
Compression Ratio	14.0	13.0	
Max. Output (Combined)	160 kW (214 bhp) / 5,700 rpm	152 kW (203 bhp) / 6,600 rpm	
Max. Torque	221 Nm / 3,600 rpm	247 Nm / 5,000 rpm	
Max. Speed	180 km/h	210 km/h	
Acceleration (0 - 100km/h)	8.9 sec	9.1 sec	
Fuel Consumption	4.6L/100km [21.7km/L]	6.6L/100km [15.1km/L]	6.8L/100km [14.7km/L]
Carbon Emissions	104g/km	150g/km	156g/km
VES Banding	B	B	
ES 300h MOTOR AND BATTERY			
Motor Type	Permanent Magnet Motor		
Max. Output	88 kW		
Max Torque	202 Nm		
Battery Type	Nickel Metal Hydride		
Number of Battery Cells	204		
CHASSIS			
Brake (Front)	Ventilated Disc		
Brake (Rear)	Solid Disc		
Suspension (Front)	Macpherson Strut		
Suspension (Rear)	Double Wishbone		
Steering System	Electronic Power Steering		
MEASUREMENTS			
Length	4,975 mm		
Width	1,865 mm		
Height	1,445 mm		
Wheelbase	2,870 mm		
Tread (Front)	1,590 mm		
Tread (Rear)	1,610 mm		
Min. Turning Radius (Tyre)	5.9 m		
Coefficient of Drag	0.26	0.27	
Kerb Weight	1,680 - 1,740 kg	1,620 - 1,680 kg	
Gross Vehicle Weight	2,150 kg	2,110 kg	
Boot Capacity	420 L		
Fuel Tank Capacity	50 L	60 L	



Note: Please inquire at your local dealer for details on the availability of features.

FEATURES

	ES 250 EXECUTIVE	ES 250 LUXURY	ES 250 F SPORT	ES 300h EXECUTIVE	ES 300h LUXURY
ULTIMATE COMFORT					
Electrically Adjustable Steering Wheel with Memory	•	•	•	•	•
Original Factory-fitted Upholstery	Lexus NuLuxe D	Semi-aniline Leather D & P	F SPORT Lexus NuLuxe D	Smooth Leather D	Semi-aniline Leather D & P
Memory Seats	10-way	14-way (D) 12-way (P)	10-way	14-way (D) 10-way (P)	14-way (D) 12-way (P)
Power Adjustable Front Seats with Lumbar Support	•	•	•	•	•
Air Ventilated Front Seats	•	•	•	•	•
Tri-Zone Independent Climate Control	Dual-zone	•	Dual-zone	•	•
Power Rear Sunshade	•	•	•	•	•
Manual Rear Side Door Sunshades	–	•	–	•	•
Panoramic Glass Roof	•	•	–	–	–
Moonroof	–	–	•	•	•
Climate Concierge	•	•	•	•	•
Rear Centre Armrest with Integrated Control Switches	–	•	–	•	•
Power Reclining Rear Seats	–	•	–	–	•
INTUITIVE TECHNOLOGY					
SMART Keyless Go	•	•	•	•	•
Bi-LED Headlamps	•	–	–	•	–
Bi-LED Triple 'L' Headlamps	–	•	•	–	•
Auto-Leveling	•	Dynamic	Dynamic	•	Dynamic
Rain Sensor Wipers	•	•	•	•	•
Paddle Shifters	•	•	•	•	•
Drive Mode Select (Eco/Normal/Sport/EV)	3	3	3	4 (EV)	4 (EV)
Colour Head-up Display (HUD)	–	•	•	–	•
12.3" Touch-screen Multimedia System with Navigation	•	•	•	•	•
Wireless Charger	•	•	•	•	•
Power Trunk Lid and Easy Closer with Kick sensor	•	•	•	•	•
AUDIO & ENTERTAINMENT					
Lexus Premium Audio System with 10 Speakers	•	–	–	•	–
Mark Levinson Surround Audio System with 17 Speakers	–	•	•	–	•
Apple CarPlay & Android Auto	•	•	•	•	•
AM/FM Tuner & DVD Player	•	•	•	•	•
Bluetooth Connectivity	•	•	•	•	•
4 x USB Ports / AUX Jack	•	•	•	•	•
360° PROTECTION					
LEXUS Safety System+ <ul style="list-style-type: none"> Pre-Collision System including Emergency Steering Assist (ESA), Intersection Turn Assistance & Auto Emergency Brake Dynamic Radar Cruise Control (DRCC) Lane Tracing Assist (LTA) 	•	•	•	•	•
Automatic High Beam (AHB)	•	–	–	•	–
BladeScan™ Adaptive High Beam (AHS)	–	•	•	–	•
Parking Assist Monitor (with Distance Guidelines)	•	•	•	•	•
360° Panoramic View Monitor	–	•	•	–	•
Blind Spot Monitor (BSM)	•	•	•	•	•
10 SRS Airbags	•	•	•	•	•
Control Systems: ACA / ABS / EBD / TRC / VSC / Hill-Start Assist	•	•	•	•	•
Lexus Parking Assist (8 Sensors)	•	•	•	•	•
Tyre Pressure Warning System	•	•	•	•	•
F SPORT EXCLUSIVE					
F SPORT Accelerator Pedal, Brake Pedal & F SPORT suspension	–	–	•	–	–
F SPORT Steering Wheel, Shift Lever and Knob	–	–	•	–	–
F SPORT Meters & Multi-information Display	–	–	•	–	–
RIMS & TYRES					
235/45R18 SM Wheels with Dark Grey Metallic Finish	•	–	–	•	–
235/45R18 Noise-reducing Wheels with Hyper-chrome Metallic Coating	–	•	–	–	•
235/40 R19 F-Sport Wheels	–	–	•	–	–
Spare Tyre	•	•	•	•	•

Note: Vehicles illustrated, specifications and equipment detailed in this specification sheet may vary. Lexus reserves the right to alter any details of specifications and equipment without notice. Please consult your Lexus sales consultant for details.



BORNEO MOTORS (SINGAPORE) PTE LTD | 33 LENG KEE ROAD SINGAPORE 159102 TEL: 66-31-1388 EMAIL: LEXUSCR@INCHCAPE.COM.SG

LEXUS BOUTIQUE | MON-FRI: 9AM TO 6PM SAT: 9AM TO 7PM SUNDAY & PUBLIC HOLIDAYS: 10AM TO 6PM

LEXUS SERVICE CENTRE | MON-FRI: 8AM TO 5PM SAT: 8AM TO 12PM CLOSED ON SUNDAY & PUBLIC HOLIDAYS

WWW.LEXUS.COM.SG